



PREPRESS

PRESS

POSTPRESS

# Linocolor

Scanning made simple  
because the experience is built-in

**HEIDELBERG**

# Scanning made simple • With Linocolor you get first-class scans, print-ready digital image processing, and consistent colors. Linocolor gives you the benefit of Heidelberg's experience as the world's foremost scanning innovator.

## A multi-talented helper

Working in CMYK means thinking like a printing press. Each correction in the color reproduction loop needs to be performed in CMYK. If you want to brighten a photo for a book job, for example, you need to adjust all four colors. But your operators don't have the time to do it by eye, and your customers can't wait. That's why Linocolor provides you with five intelligent assistants to give you true one-button scanning which is quick, reliable and consistent.

Color Assistant analyzes images automatically and ensures correct color settings. Job Assistant manages your job queue as well as background and batch scanning. Geo Assistant recognizes the type, size and positioning of

originals. If an original is askew, Geo Assistant straightens it out. Copix Assistant automates redigitizing screened originals. It recognizes screen resolution, screen angle and the basic density of film separations. Finally, Register Assistant is used in the Copixcompatible Nexscan and Primescan scanners for redigitizing film separations. It aligns them automatically and corrects registration errors. Add up the assistants' advantages and you'll understand why Linocolor is the productive solution for you. Then consider this: you can also use Linocolor to manipulate images from photo CDs, stock house databases and digital cameras.



The assistants really come in handy when you're creating the scans for graphic-intensive books.



### Flexible production

Linocolor optimizes your workflow by bringing versatility and task sharing to your production process. Linocolor allows you to scan multiple images while customizing the parameters for each. Background and batch processing are made easy. And network scanning and links to databases are all supported. Files can contain both image data and embedded ICC profiles, which can also be read and written with Linocolor.



Multiple scans with customized parameters – Linocolor makes it simple.

## LCH Mode

Intuitive color processing means letting your operators adjust the color as they see it, in terms of Luminance, Chroma and Hue. Linocolor's LCH controls means these three parameters can be manipulated with ease – and each independently of the others.



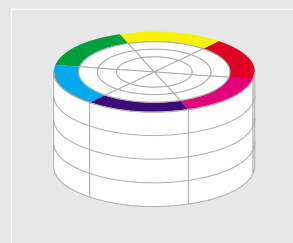
### Luminance

Luminance refers to the lightness of a color. Linocolor is built on the intuitive model of the CIE Lab color space, which means the luminance of all color changes from the bottom upwards.



### Chroma

Examine individual segments on CIE Lab model, and you will see that the chroma of each color increases from the middle of the color space outwards.



### Hue

Changes in hue in the CIE Lab color space take place in a circular motion around its center point

**One color space** • Linocolor is built on CIE Lab and conforms to the ICC standard. That gives you an integrated Color Management system that is compatible with ColorSync for Mac and ICM for PCs. Both applications support the Linocolor Color “Matching Methods” (CMM) as the basis for a consistent, open workflow that provides absolute color fidelity.

Heidelberg developed its suite of Coloropen ICC products (Scanopen ICC, Viewopen ICC and Printopen ICC) to generate ICC profiles. The result is consistent color from the scanning stage, through image manipulation on the monitor, right on to output as proof, film or direct to plate. The ICC Profile Editor integrated into Linocolor enables you to adapt any ICC input, monitor or output profile to your devices using both LCH and CMYK corrections.

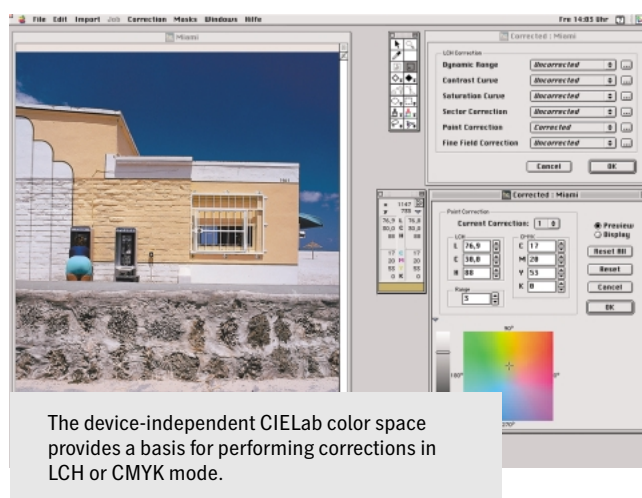
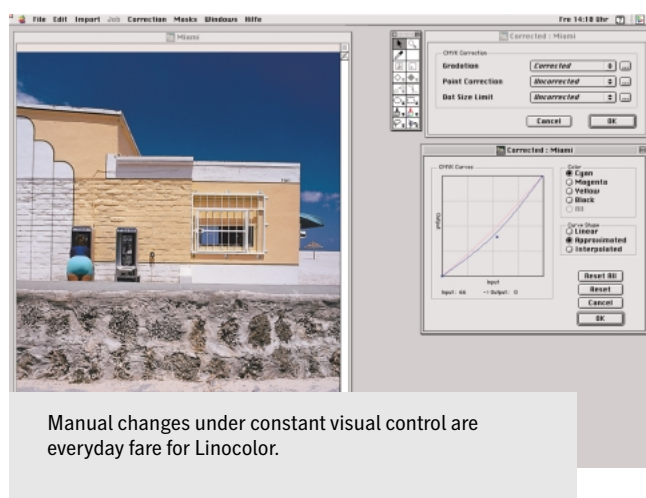
### LCH and CMYK manipulation

The CIE Lab color space allows you to perform most color corrections using both the intuitive, easy-to-learn LCH user interface and the conventional CMYK interface from

the world of print. The operator can switch easily between the two and can combine both modes depending upon the job at hand.

### Masking and retouching

Linocolor makes masking and retouching easy too. It even allows you to perform changes to the high-res data. Linocolor is the scanning and image processing software that delivers unsurpassed results.





### Print Table Editor ICC

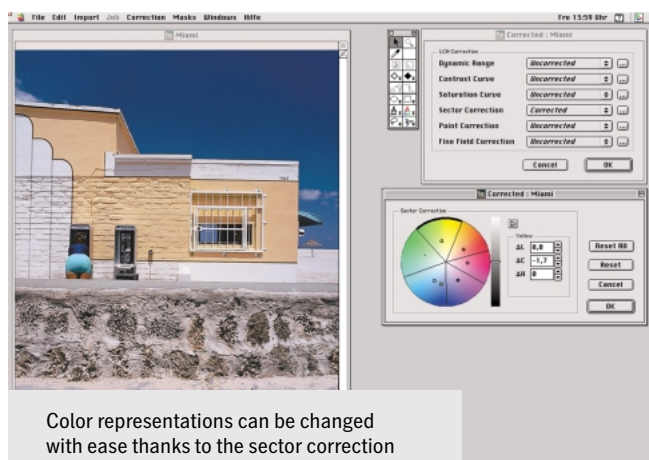
The Print Table Editor ICC enables you to manipulate the black separation and thereby adapt UCR and GCR to the needs of your output processes.

### Softproof

Linocolor provides real-time WYSIWYG visual control. Your operator's manipulations are instantly reflected on the monitor to show the image as it will appear in print for CMYK, Gray and RGB. That means the quality of the image is controlled right from the start. The detail is retained for color corrections and even rescreens. It's another quality feature of LCH manipulation.



Linocolor Color Management satisfies even the highest demands for a wide range of printing stock.



Color representations can be changed with ease thanks to the sector correction facility.





The quality of color can determine the future success of a product.

### Color fidelity with CIELab

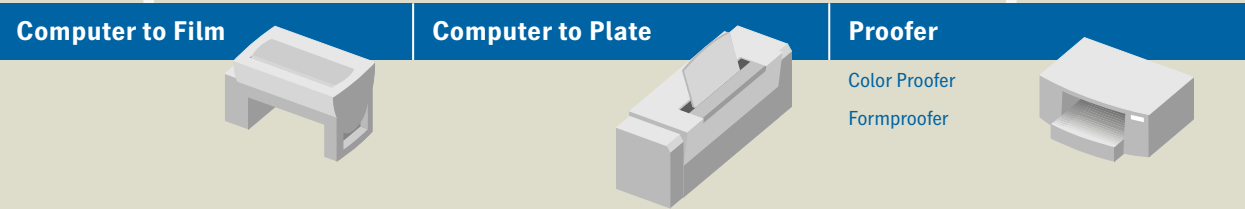
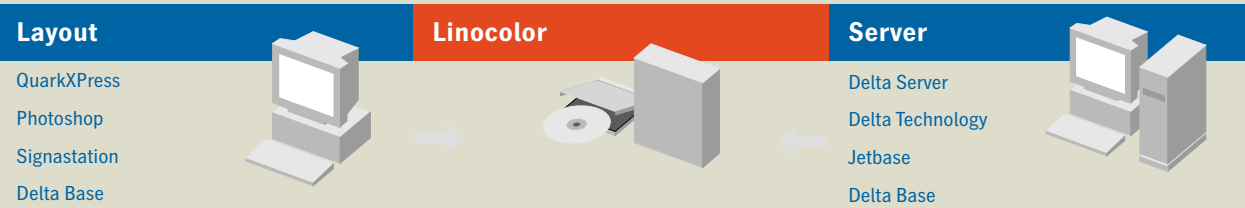
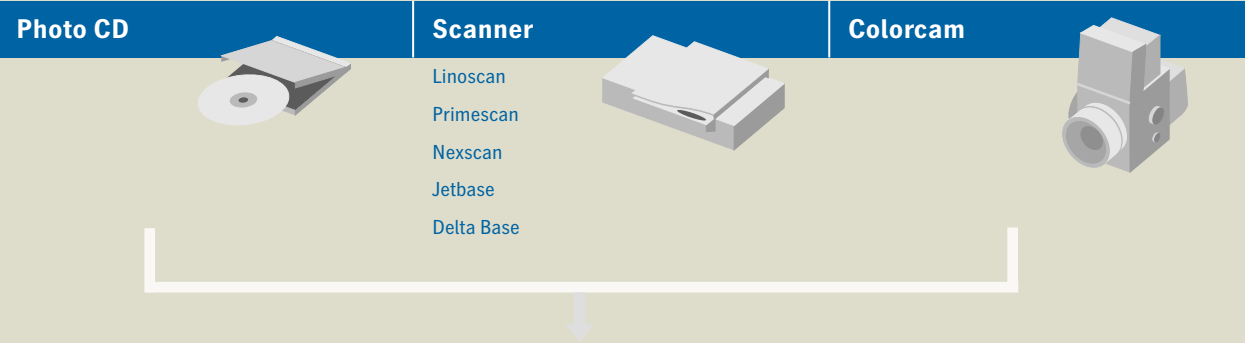
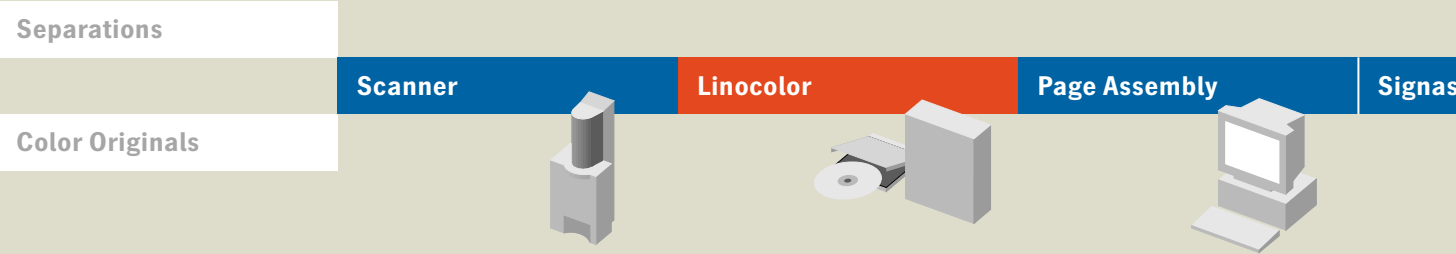
The CIELab color space on which Linocolor is based makes scanning and image manipulation easy and ensures complete color fidelity. In digital workflows, this software delivers excellent results, whether you're editing colors, integrating them into printed pages or printing them on a variety of paper stock.

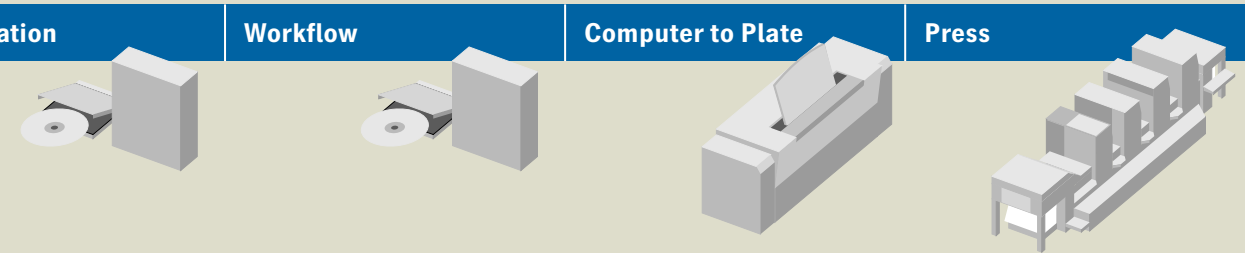
Since its introduction, Linocolor has proven to be the keystone for complete Color Management, since it covers all color spaces used in the reproduction process. Its assistants guarantee that you maximize the performance of whatever devices or printing processes you choose. All of which means you can rest assured that you have found a simple, reliable, cost-effective and future-focused solution to handle your entire workflow – from one end to the other. Its name is Linocolor. Its productive power will recharge your facility.



Linocolor ensures color consistency – even on long runs – thanks to its CIELab-based Color Management.

# Linocolor – The Start of the Perfect Workflow





Technical Specifications Linocolor

|                                       |  |
|---------------------------------------|--|
| Linocolor                             | Scanning and image enhancement software for Apple Power Macintosh computers  |
| Software protection                   | License code   |
| Software modules in scope of delivery | Linocolor with Color Assistant, Job Assistant, Print Table Editor ICC, JPEG and CCITT compression  |
| Color Assistant                       | Automatic image analysis for image highlight/shadow, color cast compensation, contrast/chroma gradation  |
| Job Assistant                         | Automated work sequences for flexible and productive workflows: Batch scan, background scan, team scan and network scan  |
| Copix Assistant                       | Automatic recognition of screen resolution, screen angle and basic film density, only in conjunction with Copix scanner option for Nexscan and Primescan   |
| Register Assistant                    | Automatic analysis of register marks of separated films for perfect alignment of color separations; only in conjunction with Copix scanner option for Nexscan and Primescan  |
| Print Table Editor ICC                | Modification of print tables that can be saved as new ICC Profiles   |
| Compression                           | JPEG compression for contone data in DCS and TIFF for following color spaces: CMYK, RGB, Gray and CIELab; CCITT compression for linework data  |
| Software modules (options)            | Geo Assistant for automatic recognition of originals in job generation; Printopen ICC for generating output profiles; Viewopen ICC for generating monitor profiles; Scanopen ICC for generating input profiles; SciBridge for outputting Scitex formats (native and handshake) |
| Color spaces supported                | CIELab, CMYK   |
| File formats supported                | TIFFLab, TIFF RGB, TIFF G, TIFF CMYK, TIFF YCC, PS, EPS, DCS, PICT, JPEG   |
| Minimum Macintosh configuration       | Power Macintosh, System 8.5, 32 MB RAM, 300 MB hard disk; 21" color monitor with ColorSync 2 profile with 24-bit video board   |
| Recommended configuration             | Power Macintosh, System 8.5, 64 MB RAM, 2 GB hard disk; 21" color monitor with ColorSync 2 profile with 24-bit video board   |



# Heidelberg – Solutions for the Entire Printing and Publishing Business • Our commitment is to being the best partner to the graphic arts industry, offering forward-looking solutions. Worldwide – Heidelberg is where your needs are met.



Our focus: the customer. Heidelberg provides custom-designed printing solutions for large and small companies.



Borders are dissolving. And that is why the Heidelberg Group has evolved into a global player for modern print solutions. But also within the world of printing, borders are rapidly vanishing. The previously separate realms of prepress, press and postpress are increasingly merging

within the scope of integrated solutions. Heidelberg has played a central role in driving this dynamic process. And our goal is still to play a leading part in shaping the future of the graphic arts industry.

Customer focus is our policy. No matter whether we are dealing with family-run operations or large corporations – our modular components offer them tailored solutions ranging from individual products to entire workflows. Heidelberg covers every stage of the print process chain with products and services that define the future of the graphic arts. Our customers can count on having a competent, reliable partner ready to support them in all areas – 365 days a year, from 250 sales and service centers worldwide.

By establishing the Print Media Academy, we have created an international center for innovation, communication and training that not only covers classical training of printers and mechanics, but also blazes new trails by offering an advanced course for print managers.



By establishing the Print Media Academy, Heidelberg is providing the global graphic arts community with a unique center for sharing knowledge.



## **Heidelberger Druckmaschinen AG**

Kurfuersten-Anlage 52–60

69115 Heidelberg

Germany

Phone +49-62 21-92-00

Fax +49-62 21-92-69 99

[www.heidelberg.com](http://www.heidelberg.com)

### **Imprint**

Printing date: 05/00

Printing plate production: CtF with Heidelberg Drysetter

Printing: Heidelberg Speedmaster

Fonts: Heidelberg Gothic, Heidelberg Antiqua

### **Trademarks**

Photoshop and PostScript are trademarks of Adobe Systems Inc. Apple, Mac, Macintosh and Power Macintosh are trademarks of Apple Computer Inc. International Color Consortium is a trademark of International Color Consortium. ICM, Windows 95, Windows 98 and Windows NT are trademarks of Microsoft Corp. QuarkXPress is a trademark of Quark Inc. SciBridge is a trademark of Scitex Corporation Ltd.

**Subject to construction modifications and other changes.**